

# The Evolution of Clean

*for Today's  
Garment Care Specialists*



**COLUMBIA**®  
DRYCLEANING MACHINES

# Purpose Ready Machines

As Garment Care Specialists search for a better way to process their work, they turn to **Columbia/ilsa** Drycleaning Systems. With more than 35 years of producing reliable solutions for the Garment Care Industry, it's no surprise that **Columbia/ilsa** earned its reputation for the most technologically advanced machines in the world.

**Columbia/ilsa's** product developments are a direct result of our ability to listen and understand what our customers need to reach their goals.

This type of industry focus sharpens our engineering division, our design evolution, and our ability to manufacture equipment and systems that achieve garment care excellence.

Let us show you why **Columbia/ilsa** is the most sought-after brand by today's Garment Care Specialist and how we make the complicated become simple.

## The Evolution of Clean

*"there is always ingenuity, passion and determination behind every great machine"*

As the industry moves from its mainstay cleaning solvent to the next generation, **Columbia/ilsa** continuously works toward new developments in the *"Evolution of Clean."*

With a keen understanding of today's solvents, a sharp focus on the needs of shop owner's, coupled with our commitment to environmental fitness, **Columbia/ilsa** offers innovative and state of the art equipment designed to be simple and easy to operate.

### Blueprints to Performance: Purpose Ready Machines

If there were an easy solution to a solvent choice, most likely you would have already made that selection. The industry tends to use the benchmark of its mainstay solvent to judge all others. While in certain ways this comparison can be helpful, quite often it tends to diminish the individual merits of all alternative solvents. Case in point, the value often used to judge a solvent's effectiveness is its KB. While KB measures aggressiveness, it should not be the only deciding factor regarding cleaning performance. Every solvent has its own unique features. The only part that shares similarity is the fact that they are all used to clean garments.

By collaborating with individual solvent manufacturers, the design team at **Columbia/ilsa** recognizes the vast differences from one solvent to the next. Considering these individual characteristics and how each solvent has specific requirements, a blueprint for *Purpose Ready Machines* was created. With machines designed for a specific solvent, cleaning performance goals can be met and the overall merits of individual solvents can be optimized. In essence, **Columbia/ilsa** gives the right combination of success when using our *Purpose Ready Machines*

## Table of Contents

- Ipura
- Compacts
- Vantage
- TL
- Tandems
- Dryniques
- H or K Version Machines



Shallow Version



Narrow Version



**Highlights**

- Cleans anything
- Use water freely in spotting
- No static. No chemical odors
- No more lint rolling of garments
- 23 gallons of solvent fills machine
- 10-fold reduced waste stream
- No chiller required (based on inlet water temp)
- Lowest utility consumption of any drycleaning machine
- Solvent mileage between 5,000 and 8,000 lbs. per gallon
- No bolt-down. No extraction. No steam
- Shortest cycle time in the industry, average 40 minutes
- No springs. No base tanks
- No powder to add.
- Can be operated 24/7/365
- So simple an air quality inspector can operate it
- Available in 40 lbs, and in two footprints
- Now with solvent heating
- Can be connected with additive injection system\*

\* Only approved additives for Hydrocarbon or Silicone Solvents

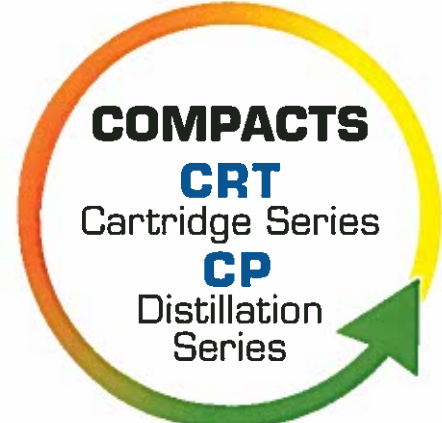
**IPURA** is the world's only patented non-immersion dry cleaning machine. Introduced to the industry in June 2005, **IPURA** quickly became the fastest-selling machine in the USA. Today, with more than 2,500 machines operating in North America, its effectiveness to clean is duly noted.

**How it Works**

A technique of introducing only a small amount of solvent to the garment load in a fine atomized application allows for a reduced amount of solvent required to wash a 40 lb. load. Approximately 1 to 1.5 gallons are used to wash a typical garment load in **IPURA**. This translates to nearly 18 times less solvent used than in a traditional immersion system of washing. **IPURA**'s atomized-solvent washing system coupled with its modified aerodynamic air flow, activated during a washing phase, allows this unique hybrid cleaning process to remove trapped dirt in textiles. The atomized-solvent application first softens and then loosens the trapped dirt while the airflow dislodges it. The same air flow will then carry the dirt and solvent/water vapors away.

Insoluble soil is trapped by the lint filter as solubles are carried onto the condenser. From there, water solubles drop to the bottom of the separator and solvent solubles are transferred to the work tank. A large format cartridge filter then cleans the solvent in a quick three-minute circulation during the cool-down step.

This unique method of cleaning translates to the lowest energy consumption of any cleaning machine in the industry. Additionally, **IPURA** generates the lowest amount of hazardous waste of any machine. A typical **IPURA** shop owner reports 40,000 pounds of cleaning before a filter change, along with 5,000 to 8,000 pounds of cleaning per gallon of solvent.



The **CRT Cartridge Series** are available in 40 and 55 lb. capacities. The system incorporates two working tanks and two independent cartridge filter circuits. The independent cartridge filter circuits

allow for the elimination of the distillation unit and reduction in energy consumption.

So simple to use, the CRT can execute programs just like the Professional Series TL.

CRT can also be predisposed to connect to your existing **Columbia/ilsa** Hydrocarbon machine making a mini Tandem system. Increase your output without increased complexity.

Quick washing phase and quick drying phase give the CRT some of the shortest cycle times in the industry.



**Columbia/ilsa CP Distillation Series** have always been a popular style. Now with new larger capacity and availability in two foot prints, there is no need to squeeze a large footprint machine into a limited-space shop.

The CP Series are available in either Professional Series or Performance Series. Additional CP Series can be ordered in either a narrow style or a shallow style. Regardless of the space limitations in your shop, we make a CP Series to fit.

The CP Series also make perfect additions to existing equipment as a complement for a growing volume in your successful shop.

**CRT'S & CP'S are available in 40lb. (Narrow or Shallow versions) and 55lb. capacities.**

*See Performance or Professional Series for standard features.*





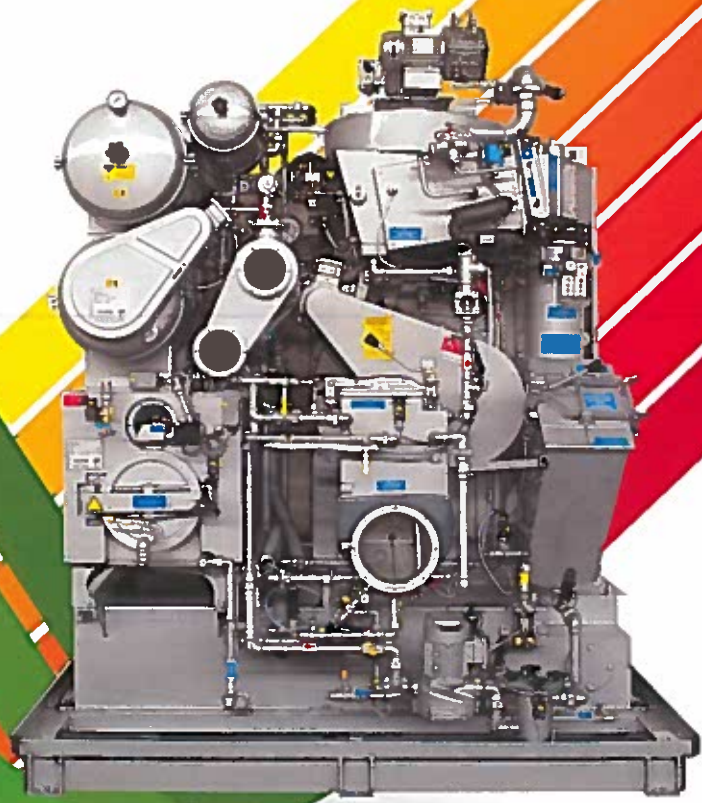
**Columbia/ilsa's  
Newest Member of the Team!**

**Welcome to the Vantage Series Machine**  
 Designed specifically to the needs of today's Garment Care Specialists, the Vantage incorporates the most innovative ideas and concepts for an industry in change. The **Columbia/ilsa** design team, along with its forward thinking Engineering division, took on the task of developing a new concept machine from the ground up. **Columbia/ilsa** has always been known as the leader in design and development of some of the industry's most reliable and top performing machines. The Vantage Series continues to reinforce that title.

Vantage is designed as a one piece, stainless steel, 3 tank platform. ALL three tanks incorporated the **Columbia/ilsa** double inclination design. Pre-disposed with a 2 Filtration circuit and an additional post-filter circuit. The Vantage can process your garment cleaning effectively, efficiently and effortlessly. Vantage is available in 40, 55 and 60 lbs. capacity. Each come equipped with standard features, such as:

- Pre-pump strainer
- Stainless steel solvent tanks
- Completely dried button trap
- Automatic solvent level sensory control
- Rear drum wash down
- Two (2) independent filtration circuits
- See through loading door (illuminated)
- In-line solvent heating by refrigeration\*
- In-line solvent cooling
- Automated additive injection pump
- iL3 touch screen computer
- Super flow batch distillation
- Single stage heated separator
- \* H Version only

Vantage is made for today's solvents and loaded with options normally only found on large capacity machines. Vantage is affordable, and with its reduced foot print and lower entry height, Vantage will fit your budget, as well as your shop!



**Professional C Series**

Get the job done with the **Performance C Series**. Loaded with standard features, three working tanks and a dual filter system, operating in accordance to your needs has never been easier.

With a newly designed filtration circuit for each working tank, and other standard features such as pre-pump filter, dried button trap, two adjustable solvent level controls, internal drum wash down system, solvent heating\*, and heated separation, the Performance C is ready to handle any workload.

Fast and easy to maintain, the Performance C integrated safety system can be operated using Class III.

Designed with Quick-Dri features of the patented Air Power Loading Door and Aero Dynamic Air Channel, cycle times are notably quicker than our former C2 series machines, one of our best selling machines.

The Performance C can also be ordered with our patented Wet & Dry steam injection (option) to enhance stain removal.



Available in 65, 80 and 99 lb. capacities.



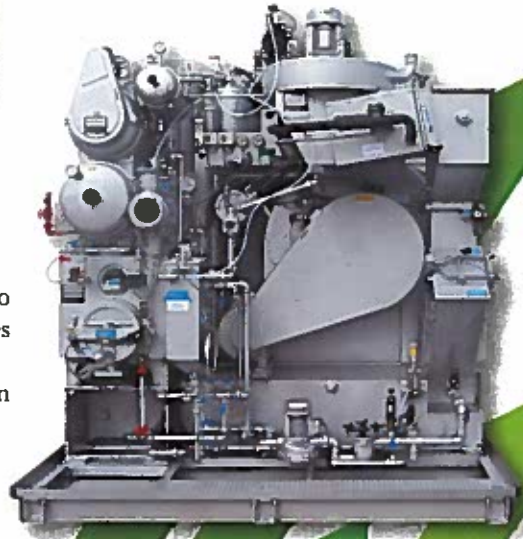
Available in 65, 80, 99, 120 and 160 lb. capacities.

**Professional N Series**

*"The only machine in the world that cleans and dries in a nitrogen atmosphere."*

In 1993 **Columbia/ilsa** introduced the **Professional N Series**, a Hydrocarbon closed circuit cleaning system. Its introduction made industry news throughout the country due to its unique safety design of using a Class III liquid with a nitrogen inert atmosphere.

Today's N Series is notably the most advanced cleaning system in the market, earning its status as the Professional N Series. Loaded with features, the Professional N Series' design allows for an unlimited amount of cleaning options.



**SAFE, SMART  
and FAST**

The Professional N Series is also fitted with an inline solvent heating system\* by steam, allowing for the highest level of stain removal.

**Highlights**

- Three working tanks plus settling tank
- Dual independent spinning filter circuits with all carbon post filter
- Inline solvent cooling
- Programmable drum turns and stops
- Programmable drum speeds
- Programmable solvent levels
- Soap injections
- Inline solvent heating system by steam\*
- Single stage heated separator

With features such as these, style a program to work in any fashion the operator desires.

\* H Version only

**T**  
**Tandem Series**  
**Performance C**  
**H or K Version**

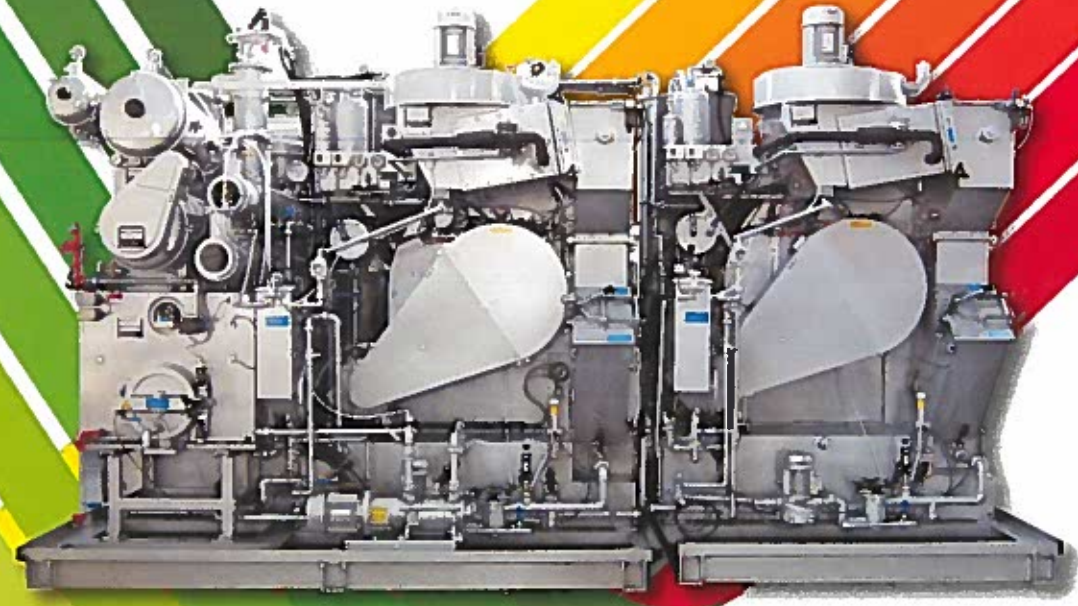
**Performance C**

Limited space? High volume? No Problem – the Performance C Series is available in Tandem configurations. Odd shaped floor plans are no problem for **Columbia/ilsa's** design team. We can configure our equipment to accommodate your shop's layout challenges.

Tandem systems can be configured in any capacity you require. As an example, a Tandem could be arranged with two different capacities drums, such as an 80 lb. connecting to a 55 lb. (80/55) which would output 135 lbs per cycle. Performance C Tandems are available up to 198 lbs. output (99/99); while Professional N Tandems are available up to 320 lbs. output (160/160).



*Columbia Tandems are the best selling Tandems in the world.*



**T**  
**Tandem Series**  
**Professional N**  
**H or K Version**

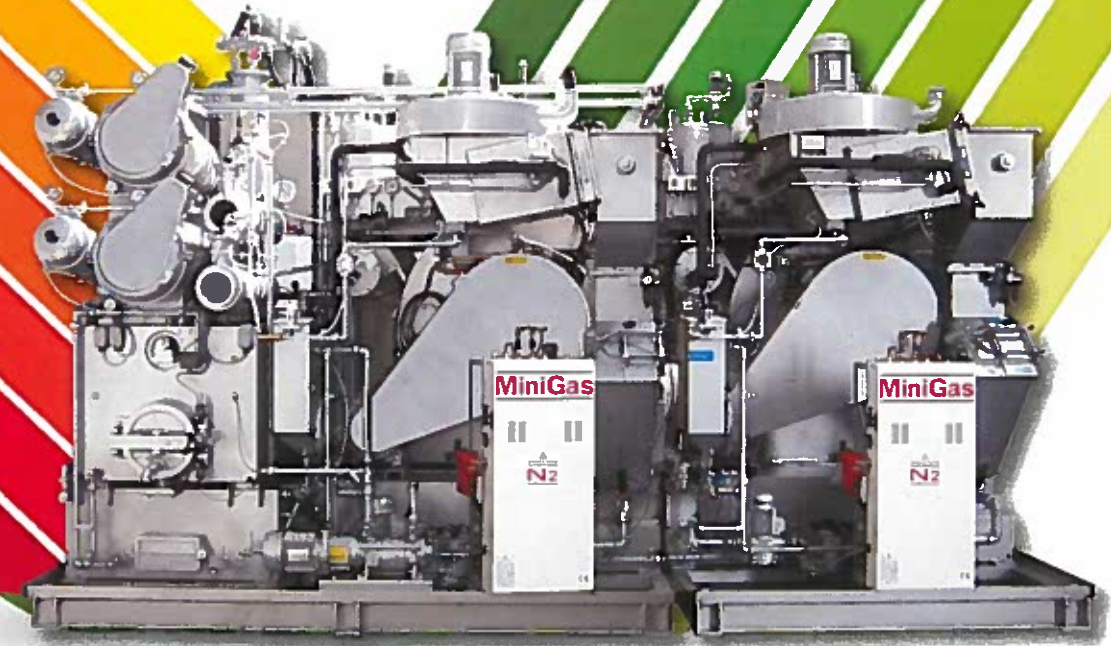
**Performance N**

Tandem systems share the distiller and larger capacity clean distilled solvent tank, while all other components remain independent.

Tandem systems solve space problems and increase output while reducing energy consumption, maintenance and cost.



*Columbia Tandems are the best selling Tandems in the world.*



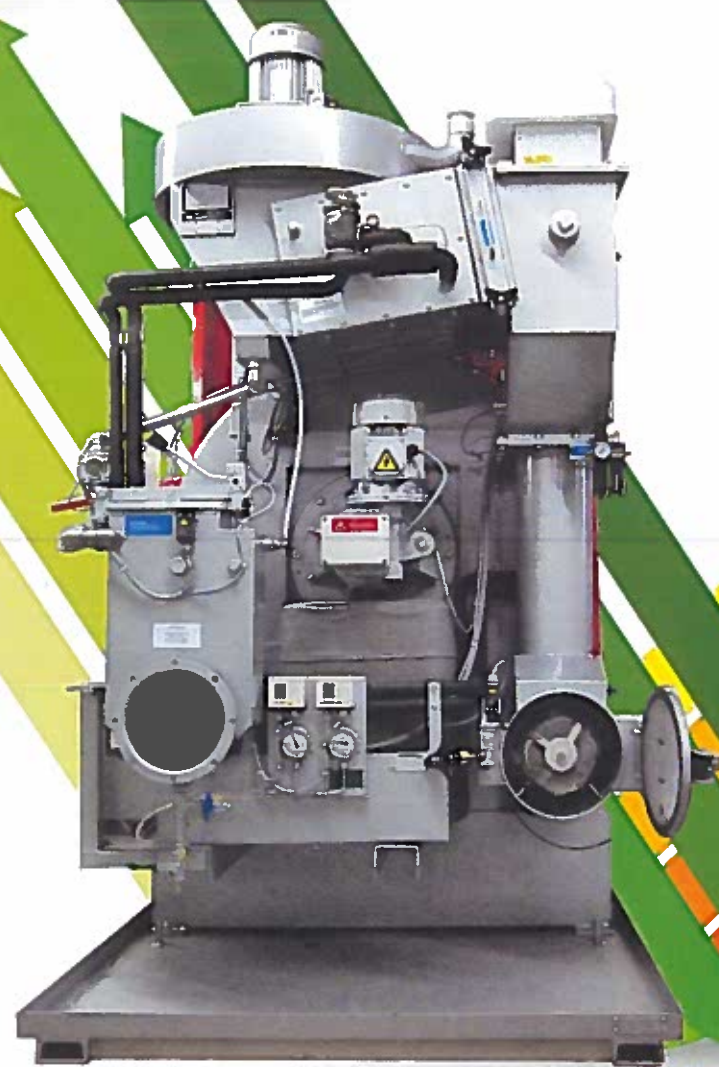


**D**  
**Drynique**  
 Reclaiming Dryer

Designed and built for use with Class IIIA.

**Drynique** offers our patented Air Power Loading Door with Aero Dynamic Design Air Channel allowing for fast output – average cycle time is approximately 33 minutes.

**Drynique** is equipped with an over sized refrigeration group, quick disconnect Aeroquip fittings on both the condensing and evaporation refrigeration coils allowing for easy cleaning. Over sized water separator, and large bag lint filter all designed to make maintenance simple. We also provide a safety lint filter further protecting the evaporation coil from collecting by pass lint. Inverter direct drive main drum motor means no belts or chains to adjust.



**Economical to use.**  
**A truly Drynique system!**

*iL3* touch screen micro-processor, with modem included, allows for programming up to 50 different drying formulas. Each formula can be programmed to suite your needs. Setting drum turns and stops, drum speed, temperature limits step by step in a program, the operator has full control of every aspect of the cycle.



**Completely Closed System**

**Highlights**

- Available in 55 and 80 pound capacities
- Containment pan included
- Non vented
- Refrigerated/heat pump
- Steam heated
- Easy to install
- Programmable Computer with thumb drive

**H Version**

H Version machines are equipped with solvent heating capabilities. These machines are designed to run all current industry solvents except for Solvon K4\*. Heating most current industry Class III solvents in the washing phase has been proven to enhance stain removal, and reduce the number of additives typically required to clean a garment load. In Columbia **C Series** machines, solvent heating is accomplished with an in-line solvent heater with refrigeration. While the **N Series** machines solvent heating is accomplished by an in-line solvent heater with steam.



**H or K**  
 Version Machines

**K Version**

K Version machines are identical in design, as the H Version, however K Version eliminates the in-line solvent heater device and uses a modified refrigeration group to enhance the performance of certain industry solvents such as Solvon K4\*.

**Contact Us!**

Confused about what solvent to select for your shop, or what Version Columbia you will need? Speak with one of our Authorized Columbia Drycleaning Machine Dealers to determine the best Model and Version Columbia for your success!



## Control

### iL3 Microprocessor

Columbia's finest control system ever developed. Touch screen operated with large readable LCD display. Easy to read four (4) color screen. Capable of storing up to fifty (50) operating programs and operated in a manual process or automatic process. IL3's proven 12 year track record, established it's state-of-the-art control capabilities. IL3 is equipped with a USB thumb drive for ease of in-house programming for either programming, requested or required, modifications. Additionally, IL3 can be predisposed with Ethernet connections for in-house network connections upon request.



**iL3 Computer**

IL3 is a programmable logic controlled (PLC) with fully programmable inputs and outputs. This ability gives an infinite amount of adaptation to the system needs and/or applications. IL3 is connected to the entire machine temperature sensor bank. It displays continuously the temperature and operating status throughout cycles, and in standby status.

IL3 also displays alarm status and maintenance messages in easy-to-read language. No need to track routine maintenance procedures, as IL3 will give alerts, such as; draining water from separator, regeneration of spin filter, or replacement of cartridge filter.

Each cycle has a title and each step has a name. It is always easy to understand the exact program and step of a program at a glance.

Fully programmable and fully functional, Columbia's IL3 is a pinnacle part to your success.

### Inverter Drive

Creating the perfect dry cleaning cycle for any type of work has never been easier. The variable speed inverter drive can be programmed by the iL3 microprocessor step by step through the complete cycle. The inverter drive allows for smooth ramp up of drum speed with less energy consumption.

## Proven Design

### Double Incline Self-Cleaning Base Tanks

Another Columbia/ilsa exclusive design is our double incline base tanks. Our base tanks are pitched from front to rear and then again from side walls to center. This design allows for sediment and water to move to the suction outlet located at the lowest point of the grades thereby reducing buildup and accumulation of contaminants load after load.

### Pre-Pump Strainer

Pre-pump strainer keeps pins and other debris from clogging the pump. It protects the pump seal from deteriorating for longer service life and less chance of down time. Simple daily maintenance ensures reliability of solvent flow throughout the work day.



**Pre-Pump Strainer**

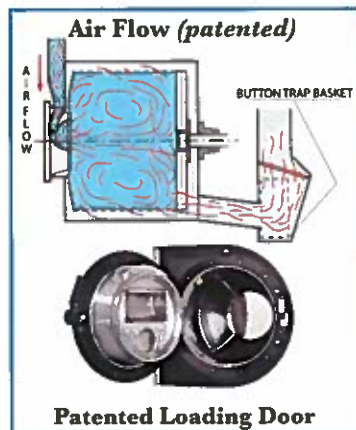
### Rear Drum Wash Down

Rear wash down feature is standard on all Columbia/ilsa models. This simple and fully automatic feature reduces accumulation of lint build-up behind the cylinder cage and rear wall of the drum housing. The feature is automatically executed in every programmed wash cycle.

## Quick-Dri

### Patented Air Power Loading Door

The innovative patented loading door is one of the reasons for the fast drying time in our Quick-Dri Series of machines. Features include stainless steel construction, built-in deflector, gentle drying and less lint. No over-drying of the garments occurs. Columbia/ilsa Quick-Dri systems are notably the most effective use of an air flow in closed-circuit drying systems.



**Patented Loading Door**

### Double Lint Filter plus Safety Filter

Now there are three ways to capture lint in the drying process. This unique feature helps avoid costly repairs. Easy access and servicing helps to keep daily production moving.

### EZ Access Self-Sealed Refrigeration Coils

Our classic refrigeration group design continues to allow easy accessibility when servicing the refrigeration, heat pump and solvent cooling coils. Engineered and designed with the operator in mind, this unique and well-proven system allows for the removal of individual refrigeration group components without the loss of Freon or the removal of the entire system. This separated system has influenced competitors to "boldly" imitate this Columbia/ilsa original design. Naturally, we are flattered.

